



[www.beal-homes.co.uk](http://www.beal-homes.co.uk)



# THE APPLEBY

2 BEDROOM HOME

PLOTS 19-20 & 37-38



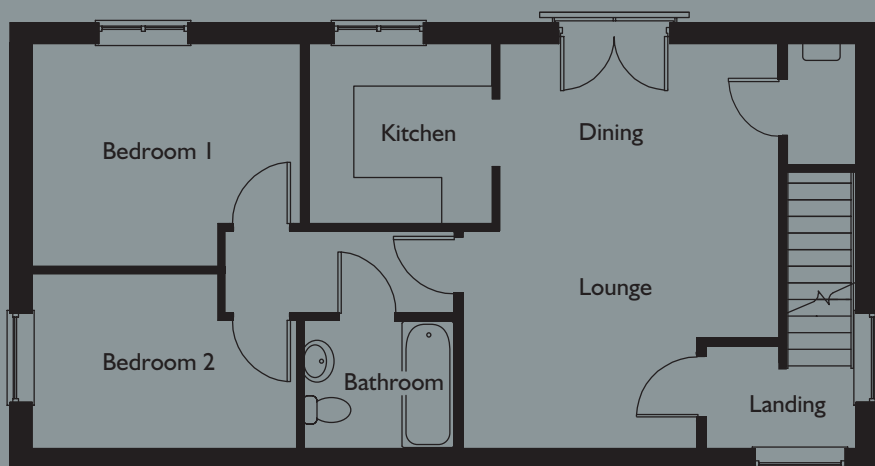
St. George's Court

**BEAL HOMES**  
*a total lifestyle concept*

## THE APPLEBY

PLOTS 19-20, 37-38

FIRST FLOOR



GROUND FLOOR



### THE APPLEBY

- > ENTRANCE HALLWAY
- > GARAGE WITH STORE
- > OPEN PLAN LIVING / DINING AREA WITH JULIETTE BALCONY
- > CONTEMPORARY KITCHEN
- > TWO DOUBLE BEDROOMS

### FIRST FLOOR

#### LOUNGE / DINING

17'8" (5.39m) x 13'10" (4.21m max)

**KITCHEN** 7'10" (2.39m) x 8' (2.44m)

**BEDROOM 1** 9'9" (2.96m) x 11'9" (3.57m)

**BEDROOM 2** 7'7" (2.33m) x 11'6" (3.51m)

**BATHROOM** 5'7" (1.70m) x 6'7" (2.01m)

### IMPORTANT NOTICE

These particulars are for illustration only. We operate a policy of continuous product development and individual features such as windows, garages and elevational treatments may vary from time to time. Consequently these particulars should be treated as general guidance only and cannot be relied upon as accurately describing any of the Specified Matters prescribed by an Order made under the Property Misdescription Act 1991. Nor do they constitute a contract, part of a contract or warranty. \*Subject to stage of construction at time of reservation, and building regulations where applicable.

**BEAL HOMES**

*a total lifestyle concept*

Holderness House, Tower House Lane, Hedon Road, Kingston-Upon-Hull, HU12 8EE  
Tel: 01482 899114 Fax: 01482 890902 Web: [www.beal-homes.co.uk](http://www.beal-homes.co.uk)