



3 BEDROOM HOME

A STYLISH AND PRACTICAL HOME FEATURING:

- > Central entrance hallway
- > Kitchen /diner with French doors leading to garden
- > Separate utility and storage room
- > Ground floor cloakroom
- > Master bedroom with en-suite
- > Family bathroom

THE DALBY

BEAL HOMES
a total lifestyle concept

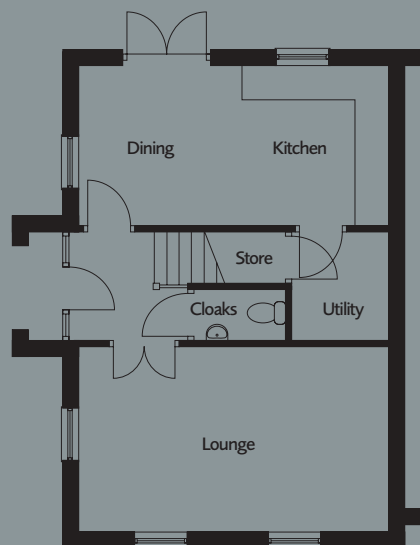
THE DALBY

3 BEDROOM HOME

THE BEAL DIFFERENCE:

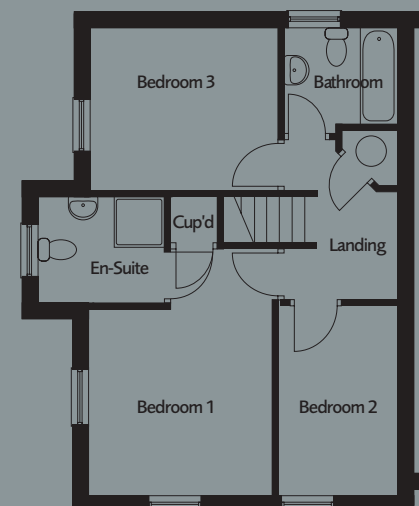
- > Ability to change internal layout - creating a bespoke house*
- > Choice from 'GOLD' range of kitchens and features
- > Kitchen design service to customise the layout to suit you*
- > Choice of designer internal fittings & fixtures
- > Choice of fire and surround
- > Choice of contemporary ceramic tiling
- > Security alarm system
- > 'Low maintenance' windows, fascias and soffits
- > 6ft privacy fencing to garden
- > Extensive list of 'fitted as standard' items

GROUND FLOOR



LOUNGE 17'11" (5.45m) x 10'5" (3.18m)
KITCHEN/DINING 17'11" (5.45m) x 9'4" (2.85m)
UTILITY 5'5" (1.66m) x 6'4" (1.92m)
CLOAKS 5'5" (1.65m) x 3'2" (0.96m)

FIRST FLOOR



BEDROOM 1 10'3" (3.14m) x 14'1" (4.30m)
EN-SUITE 7'5" (2.26m) max x 6'1" (1.85m) max
BEDROOM 2 10'11" (3.34m) x 9'5" (2.89m)
BEDROOM 3 7'3" (2.21m) x 10'9" (3.29m)
BATHROOM 6'7" (2.01m) x 5'7" (1.71m)

Important Notice

These particulars are for illustration only. We operate a policy of continuous product development and individual features such as windows, garages and elevational treatments may vary from time to time. Consequently these particulars should be treated as general guidance only and cannot be relied upon as accurately describing any of the Specified Matters prescribed by an Order made under the Property Misdescription Act 1991. Nor do they constitute a contract, part of a contract or warranty. *Subject to stage of construction at time of reservation, and building regulations where applicable.

BEAL HOMES
a total lifestyle concept

Holderness House, Tower House Lane, Hedon Road, Kingston-Upon-Hull, HU12 8EE
Tel: 01482 899114 Fax: 01482 890902 Web: www.beal-homes.co.uk